



SONGBIRD
LIVING HARMONY OXLEY



GREEN LIVING, CLOSE TO THE CITY

NAME: LOT 27 BY BREEZEWAY HOUSE

Lot size 887m² | House size: 298m²

This incredible 4 bedroom by Breezeway comes with a secluded master bedroom for the parents and separate living areas for a big family! A butlers pantry and large spacious deck, showcases the endless entertaining possibilities! This large home is perfectly designed for a steep downward sloping block.

Features include:

- 6.2kW solar PV plus Tesla Powerwall 2.0 battery with blackout backup protection
- Living room Air Conditioner Featuring Wi-Fi capability to allow for pre-cooling
- Heat Pump Hot Water System
- 5000 litre Rainwater Tank
- \$5,000 performance rebate (subject to Terms and Conditions)

1300 051 041 | hello@songbirdoxley.com.au

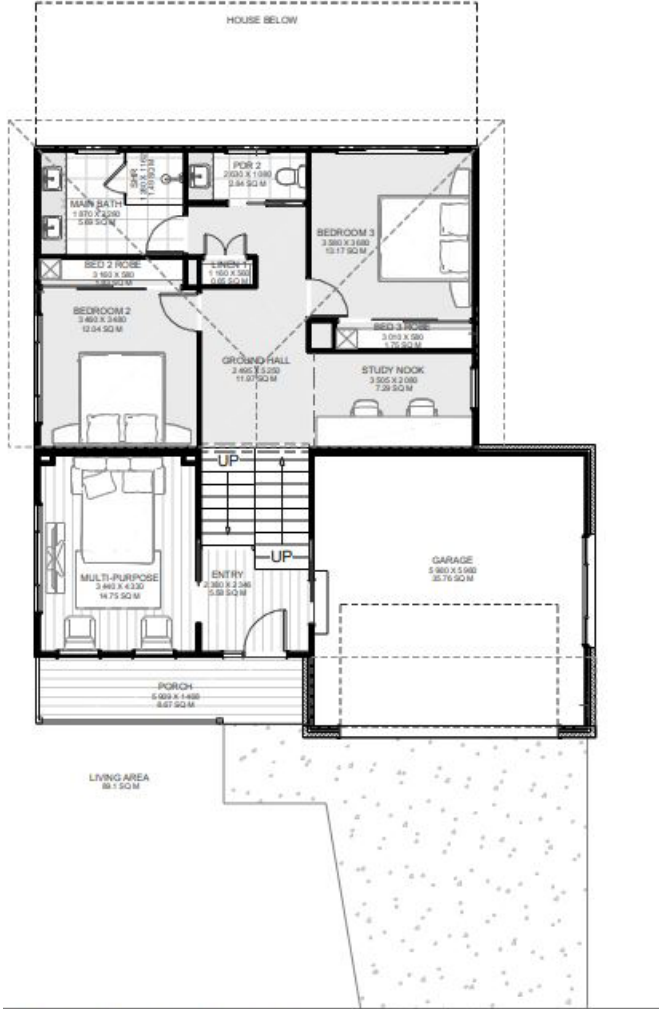
[SONGBIRD OXLEY.COM.AU](https://www.songbirdoxley.com.au)

Price correct at time of publication and is subject to change without notice, doesn't include land price. House Only. See [songbirdoxley.com.au](https://www.songbirdoxley.com.au) for further information. Images are for illustrative purposes only and may not represent final built product.



SONGBIRD
LIVING HARMONY OXLEY

Ground Floor



First Floor



NAME: LOT 27 BY BREEZEWAY HOUSE

Lot size 887m² | House size: 298m²



1300 051 041 | hello@songbirdoxley.com.au

SONGBIRD OXLEY.COM.AU

Price correct at time of publication and is subject to change without notice, doesn't include land price. House Only. See songbirdoxley.com.au for further information. Images are for illustrative purposes only and may not represent final built product.