



SONGBIRD
LIVING HARMONY OXLEY



GREEN LIVING, CLOSE TO THE CITY

NAME: LOT 29 BY BREEZEWAY HOUSE

Lot size 1,091m² | House size: 281m²

A Hamptons-style home with a wide frontage integrated into the natural typography of the block. A spacious entry leads down to the large open living area, opening out further to a deck. The upper levels house the bedrooms for the family.

Features include:

- 6.2kW solar PV plus Tesla Powerwall 2.0 battery with blackout backup protection
- Living room Air Conditioner Featuring Wi-Fi capability to allow for pre-cooling
- Heat Pump Hot Water System
- 5000 litre Rainwater Tank
- \$5,000 performance rebate (subject to Terms and Conditions)

1300 051 041 | hello@songbirdoxley.com.au

[SONGBIRD OXLEY.COM.AU](https://songbirdoxley.com.au)

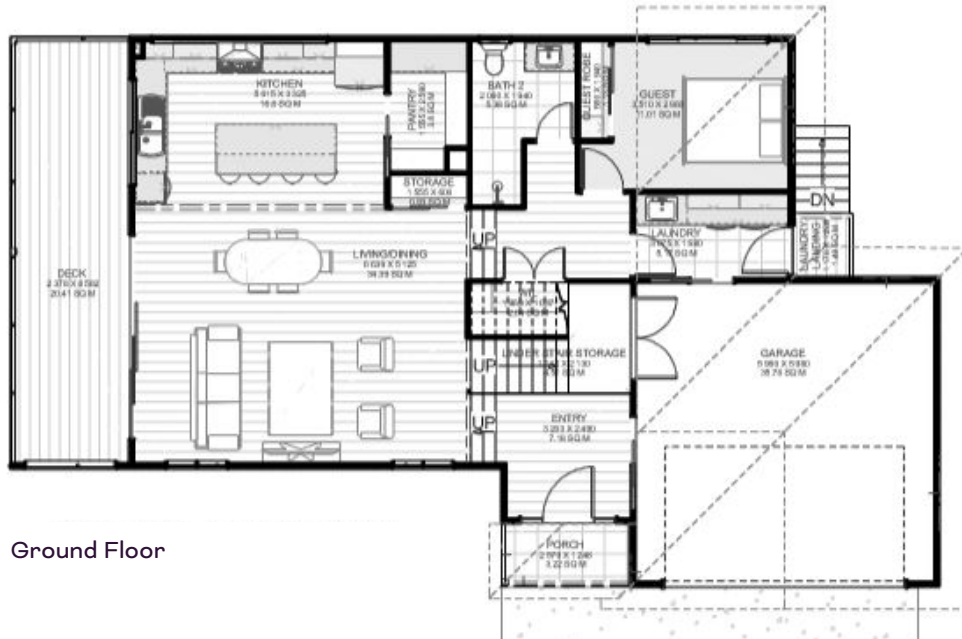
Price correct at time of publication and is subject to change without notice, doesn't include land price. House Only. See songbirdoxley.com.au for further information. Images are for illustrative purposes only and may not represent final built product.



SONGBIRD
LIVING HARMONY OXLEY



First Floor



Ground Floor



NAME: LOT 29 BY BREEZEWAY HOUSE

Lot size 1,091m² | House size: 281m²



Queensland
Government

1300 051 041 | hello@songbirdoxley.com.au

SONGBIRD.OXLEY.COM.AU

Price correct at time of publication and is subject to change without notice, doesn't include land price. House Only. See songbirdoxley.com.au for further information. Images are for illustrative purposes only and may not represent final built product.