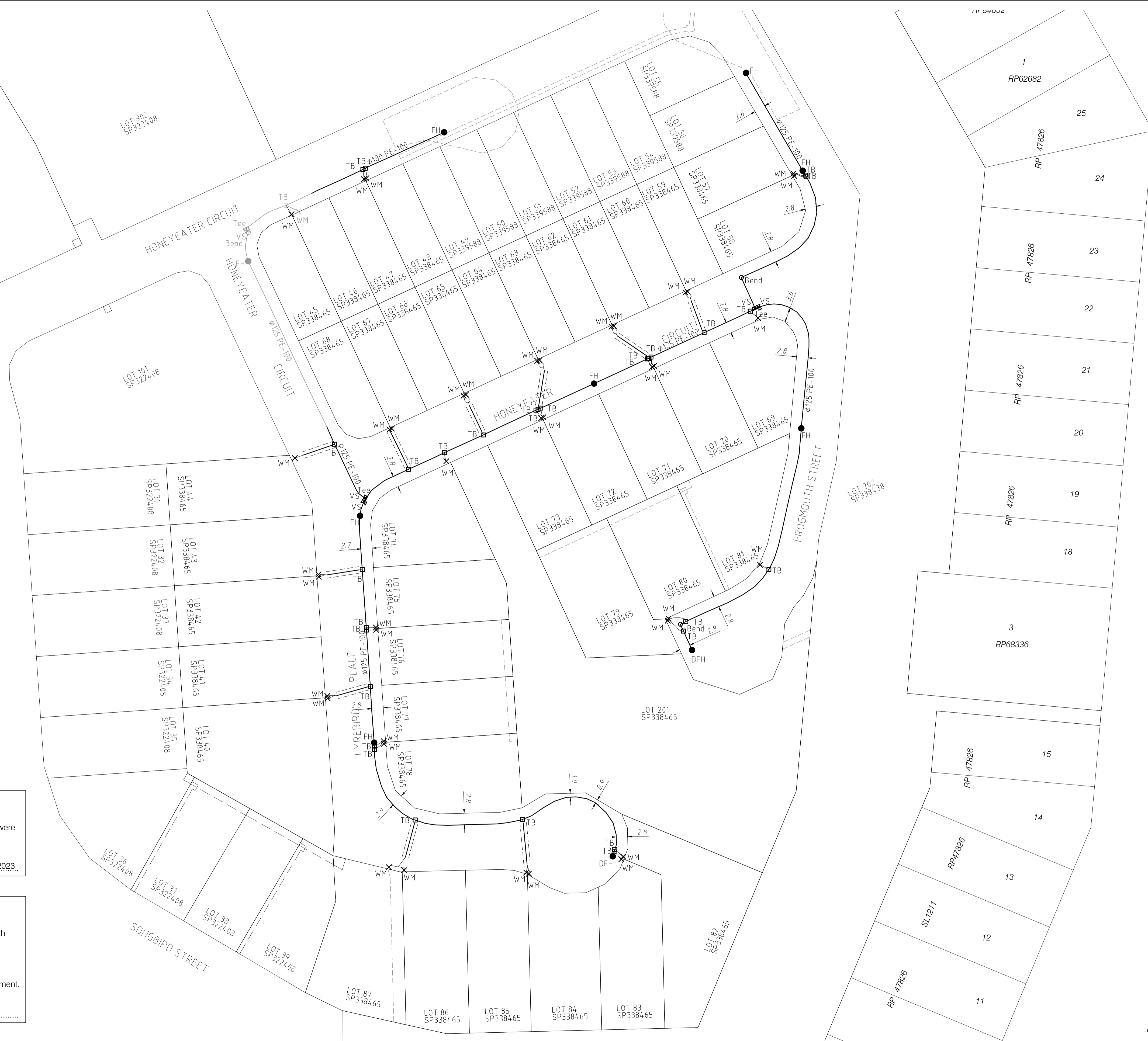
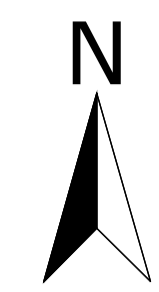


**LEGEND**

- (FH) FIRE HYDRANT / (DFH) DUCKFOOT
- ⊗ (VS) STOP VALVE
- ⊗ (VA) SCOUR ASSEMBLY
- (TB) TAPPING BAND
- × (WM) WATER METER (SEQ 20φ)
- └ END CAP
- └ TEE
- ^ (RE) REDUCER
- BEND
- DICL WATER MAIN CROSSING
- ==== CONDUIT / CROSSING
- EXISTING WATER



**NOTES**

- ALL WATER RETICULATION PIPES ARE PE-100 PN16 U.N.O.
- ALL WATER SERVICE CROSSING PIPES ARE 100 uPVC PN9 U.N.O.
- ALL FIRE HYDRANTS ARE 100 SPRING U.N.O.

**REGISTERED SURVEYOR'S CERTIFICATION**

.....LANDPARTNERS PTY LTD..... hereby certify that the vertical and horizontal locations and dimensions shown on this plan are a true and correct record and were located by survey.

*R. G. Andrew* Authorised Delegate  
LandPartners Pty Ltd, Reg. Surveyor No. S4118 Date: 13/12/2023

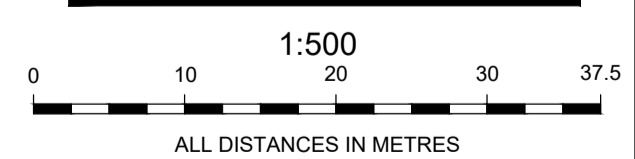
**ENGINEER'S CERTIFICATION**

I, ....., hereby certify that:

1. The information contained in this drawing / document is in compliance with approved drawings and design.
2. The new water and sewerage works defined by this drawing have been designed and constructed in accordance with the SEQ Code.
3. This represents an accurate record of as-constructed works.
4. I accept responsibility for the information contained in this drawing / document.

RPEQ (signature) \_\_\_\_\_ RPEQ No. \_\_\_\_\_ Date: \_\_\_\_\_

**AS CONSTRUCTED**



<b>A1</b>	1	13/12/2023	INITIAL ISSUE	BJB	MJK	RA
	INDEX	DATE	REVISIONS	DRAWN	CHECKED	PASSED

DRAWN	BJB	13/12/2023
CHECKED	MJK	13/12/2023
PASSED	RA	13/12/2023
INITIALS	DATE	

**LANDPARTNERS**  
surveyors and planners

PO Box 1399  
Milton QLD 4064

P: (07) 3842 1000  
F: (07) 3842 1001  
E: info@landpartners.com.au  
W: www.landpartners.com.au

**Queensland Urban Utilities**

OXLEY PDA STAGE 2  
AS CONSTRUCTED WATER  
22-PNT-56996

SCALE	1:500
SHEET 1	OF 1 SHEETS
DRAWING NO.	BRSS7460-002-90-1