



SONGBIRD
LIVING HARMONY OXLEY



3  2.5  2 

LIVE A LIFE OF COMFORT IN A SUSTAINABLY DESIGNED HOME

NAME: BATEMAN IMPRESSIONIST BY GALLERY GROUP

Lot size: 319m² | House size: 226m²

Enter your home and be immediately welcomed into the open plan living and dining area, with the chef's kitchen overlooking the heart of the home. The kitchen features exceptional inclusions such as ceramic mosaic tiles and stone benchtops.

Upstairs are 3 bedrooms plus a media room, perfect for family movie nights. The primary bedroom features a walk-in robe and ensuite bursting with natural light spilling in from the wrap-around balcony; the perfect location for a relaxing morning coffee.

Features include:

- Fixed price contract
- NatHERS rating of at least 6 stars
- 2kW of solar and 13.5kW Tesla Powerwall 2 battery
- Air conditioning to living area and primary bedroom
- 2,500 litre rainwater tank
- Landscaping
- Access to Customer Client portal

0423 769 796 | ted.h@raywhite.com

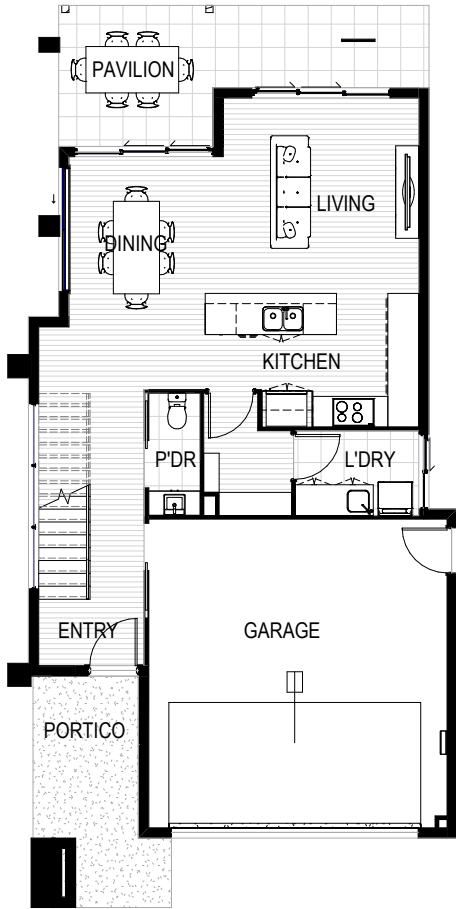
[SONGBIRD OXLEY.COM.AU](https://songbirdoxley.com.au)

*Price correct at time of publication and is subject to change without notice.
Images are for illustrative purposes only and may not represent final built product.

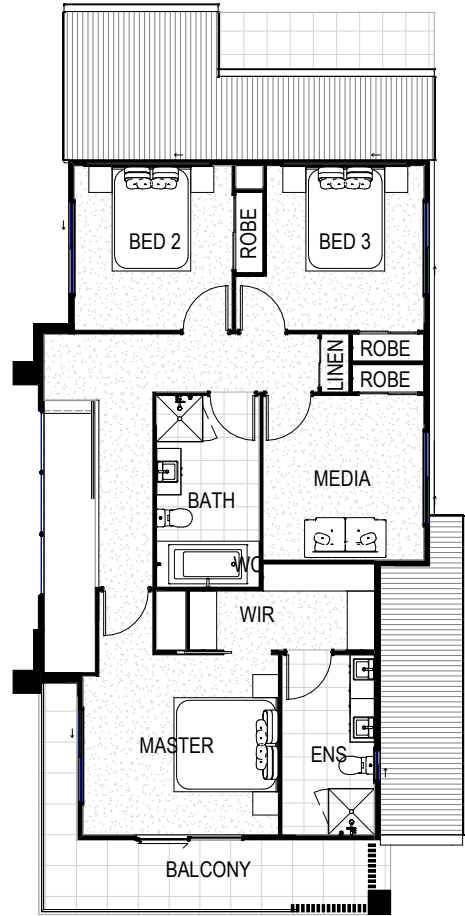


SONGBIRD
LIVING HARMONY OXLEY

Ground Floor



First Floor



GALLERY

GROUP

NAME: BATEMAN IMPRESSIONIST BY GALLERY GROUP

Lot size: 319m² | House size: 226m²



Queensland
Government

0423 769 796 | ted.h@raywhite.com

SONGBIRD.OXLEY.COM.AU

*Price correct at time of publication and is subject to change without notice.
Images are for illustrative purposes only and may not represent final built product.