



**SONGBIRD**  
LIVING HARMONY OXLEY



3  2.5  2 

## FEELING AT HOME IS A STANDARD INCLUSION

NAME: DONATELLO MODERNIST BY GALLERY GROUP

Lot size: 288m<sup>2</sup> | House size: 223m<sup>2</sup>

The Donatello Modernist is a spacious double-storey home designed specifically for the modern family, featuring multiple large living areas, including a media room and upstairs retreat.

Featuring 3 bedrooms the primary is complimented by an ensuite and walk-in robe.

Storage has been meticulously thought out in this design with linen storage on both levels of the home, additional storage upstairs and in-built under stair storage.

Features include:

- Fixed price contract
- NatHERS rating of at least 6 stars
- 2kW of solar and 13.5kW Tesla Powerwall 2 battery
- Air conditioning to living area and primary bedroom
- 2,500 litre rainwater tank
- Landscaping
- Access to Customer Client portal

0423 769 796 | [ted.h@raywhite.com](mailto:ted.h@raywhite.com)

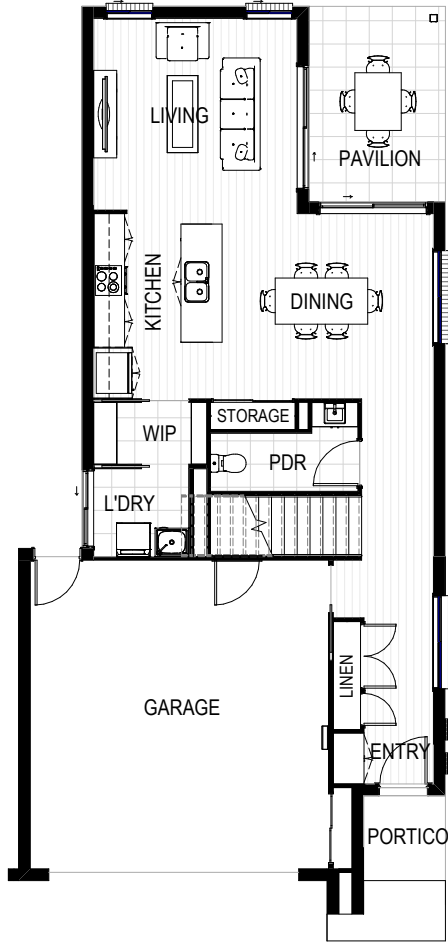
[SONGBIRDOXLEY.COM.AU](http://SONGBIRDOXLEY.COM.AU)

\*Price correct at time of publication and is subject to change without notice.  
Images are for illustrative purposes only and may not represent final built product.

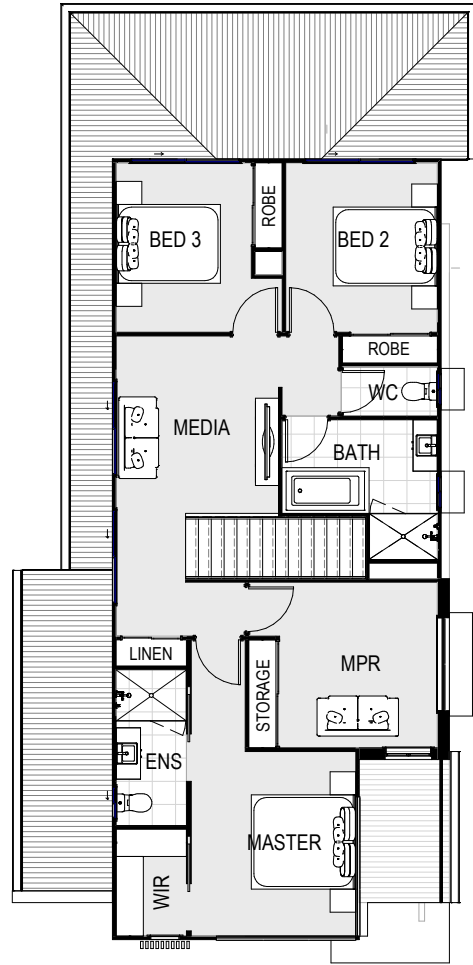


**SONGBIRD**  
LIVING HARMONY OXLEY

Ground Floor



First Floor



# GALLERY GROUP

NAME: DONATELLO MODERNIST BY GALLERY GROUP

Lot size: 288m<sup>2</sup> | House size: 223m<sup>2</sup>



**Queensland  
Government**

0423 769 796 | [ted.h@raywhite.com](mailto:ted.h@raywhite.com)

[SONGBIRD.OXLEY.COM.AU](http://SONGBIRD.OXLEY.COM.AU)

\*Price correct at time of publication and is subject to change without notice.  
Images are for illustrative purposes only and may not represent final built product.