



SONGBIRD
LIVING HARMONY OXLEY



3  2.5  2 

HARMONY BY DESIGN

NAME: REID EXPRESSIONIST BY GALLERY GROUP

Lot size: 288m² | House size: 230m²

The Reid Expressionist is a true family home, boasting an open plan kitchen dining area with walk-in pantry, a living room and a multi-purpose room offering the flexibility to be utilised as a home office, additional living room or bedroom.

The second level is comprised of 3 spacious bedrooms including the primary with ensuite and walk-in robe, plus a media room.

Features include:

- Fixed price contract
- NatHERS rating of at least 6 stars
- 2kW of solar and 13.5kW Tesla Powerwall 2 battery
- Air conditioning to living area and primary bedroom
- 2,500 litre rainwater tank
- Landscaping
- Access to Customer Client portal

0423 769 796 | ted.h@raywhite.com

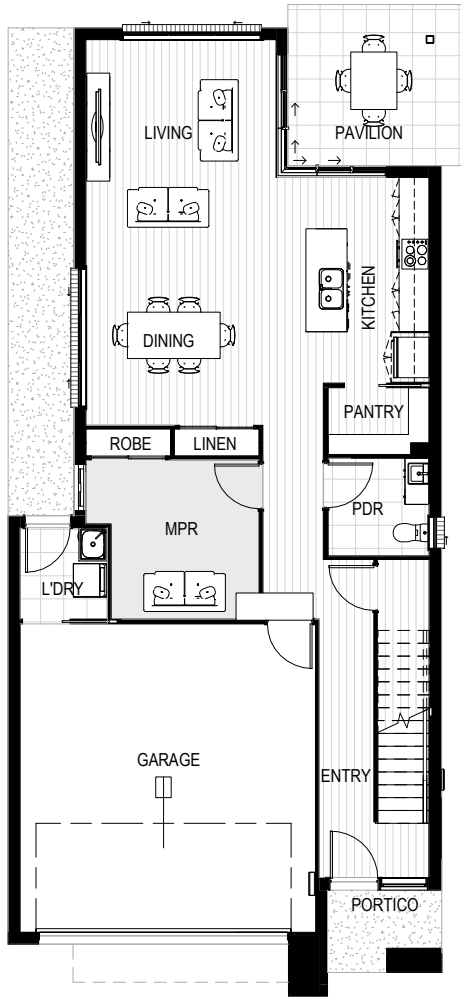
[SONGBIRD OXLEY.COM.AU](https://songbirdoxley.com.au)

*Price correct at time of publication and is subject to change without notice.
Images are for illustrative purposes only and may not represent final built product.

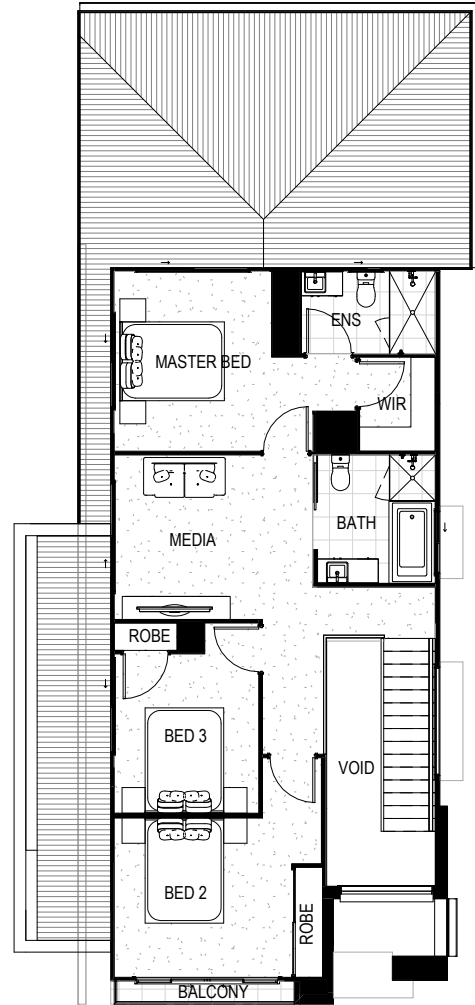


SONGBIRD
LIVING HARMONY OXLEY

Ground Floor



First Floor



GALLERY

GROUP

NAME: REID EXPRESSIONIST BY GALLERY GROUP

Lot size: 288m² | House size: 230m²



Queensland
Government

0423 769 796 | ted.h@raywhite.com

SONGBIRD.OXLEY.COM.AU

*Price correct at time of publication and is subject to change without notice.
Images are for illustrative purposes only and may not represent final built product.