



**SONGBIRD**  
LIVING HARMONY OXLEY



3  2.5  2 

## LOT 51

### LIVE A LIFE OF COMFORT IN A SUSTAINABLY DESIGNED HOME

Lot size: 288m<sup>2</sup> | House size: 227m<sup>2</sup>

The Lower Living A design, with its striking Surrealist Façade, is a masterstroke of style and functionality. Thoughtfully crafted by Gallery, this home offers a seamless blend of contemporary design and family practicality while creating a sense of harmony with the streetscape, through its bold architectural lines and carefully curated interiors.

The ground floor opens into expansive living and dining areas, designed to flow effortlessly into the pavilion. This indoor-outdoor connection forms the heart of the home, perfect for entertaining or unwinding in nature. The kitchen, with its sleek layout and walk-in pantry, ensures effortless functionality in daily living. The upper level is a haven of privacy and comfort. The luxurious master suite, with its walk-in robe, ensuite, and private balcony, provides a retreat-like atmosphere. The versatile activity room offers adaptability, while the additional bedrooms ensure space and comfort for every member of the family.

#### Key Features:

- Master suite with walk-in robe, ensuite, and private balcony.
- Two additional bedrooms with built-in robes and natural light.
- Activity room for family gatherings, play, or work.
- Modern kitchen with walk-in pantry and clever storage.
- Sustainable design aligning with Songbird Oxley's energy-efficient commitment.

This home is more than a residence—it's a thoughtfully designed retreat that harmonises with the natural beauty of Songbird Oxley, embodying the spirit of community and modern family living.

0423 769 796 | [ted.h@raywhite.com](mailto:ted.h@raywhite.com)

[SONGBIRDOXLEY.COM.AU](http://SONGBIRDOXLEY.COM.AU)

\*Price correct at time of publication and is subject to change without notice.  
Images are for illustrative purposes only and may not represent final built product.

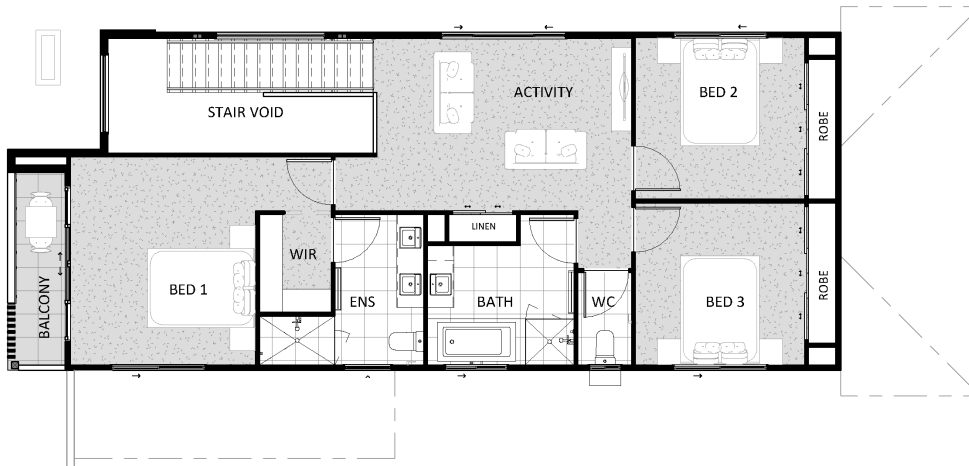


**SONGBIRD**  
LIVING HARMONY OXLEY

Ground Floor



First Floor



# GALLERY

## LOT 51

Lot size: 288m<sup>2</sup> | House size: 227m<sup>2</sup>



**Economic  
Development  
Queensland**

0423 769 796 | [ted.h@raywhite.com](mailto:ted.h@raywhite.com)

[SONGBIRD.OXLEY.COM.AU](http://SONGBIRD.OXLEY.COM.AU)

\*Price correct at time of publication and is subject to change without notice.  
Images are for illustrative purposes only and may not represent final built product.